



# 1.5 Acres in Tavistock

*210 William Street South, Tavistock*

## THE PROPERTY

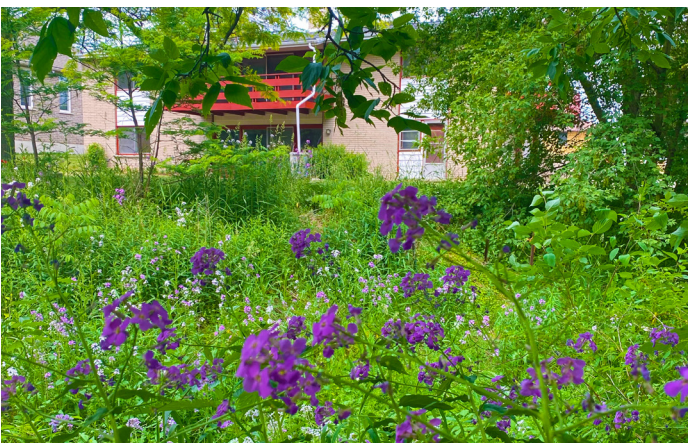
This expansive, mid-century home is impressively situated on a rare, 1.5 acre lot on the edge of Tavistock. Take the property's footbridge across the creek onto a large, private, tree-lined green space featuring a pond. The spacious property offers you a tranquil setting for gardening, outdoor recreation, or simply to savour the beauty of nature in your own backyard. The original,

owner-built, mid-century, raised bungalow has a wide footprint with an abundance of floor-to-ceiling windows. The main level features two balconies and a walkout that seamlessly connects the indoor and outdoor spaces allowing you to enjoy the stunning views and fresh air. You have the opportunity to make this property truly your own. MLS #40437515

## DETAILS

One owner  
 Built in 1969  
 3 bedrooms  
 3 baths, sauna  
 2-storey shed  
 Taxes: \$4,592.





## Adam & Lesli Spylo

Sales Representatives

[adam@spylorealty.com](mailto:adam@spylorealty.com)

[lesli@spylorealty.com](mailto:lesli@spylorealty.com)

**519-744-3000**

**kw** INNOVATION

KELLERWILLIAMS REALTY BROKERAGE  
INDEPENDENTLY OWNED & OPERATED

Not intended to solicit sellers or buyers  
under contract with another Realtor.

